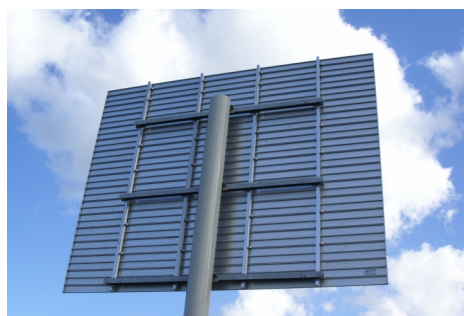




Leading forward.

ALISA Mast signs

- Maximum flexibility
- Easy to install
- Fully modular
- Good readability
- A long lifespan



Our Mast signs

Mast signs are a form of signage, in which no signage above the roadways is required. That is why our ALISA mast signs are ideal for middle and/or outer verge locations. Our mast signs can be attached to aluminium T-masts and to steel BOD masts. The size of our ALISA products are flexible due to the use of aluminium strips in which the retroreflective foil comes all the way to the edges of the sign. Because of this, the overall picture looks very neat.

Important advantages

- Maximum flexibility, the size of signs can be determined by our client
- Easy to install due to light aluminium
- Fully modular, a kit which will be delivered in parts
- Good readability, hardly and dew on the signs
- The signs have a long lifespan (Technical lifespan is at least 25 years)
- Cradle to Cradle certified
- Various support constructions possible:
 - - Aluminium VICA T-masts
 - - Steel masts
 - - Preassembly possible up until 3600mm
 - - Can be combined with the possibility to rotate

Mechanical properties

- The base material is anodised aluminium
- Class 3 retroreflective foil
- Width dimension variable per mm
- Height dimension variable per 150 mm
- Weight of the sign is 14 kg per m² (excluding construction)
- Temperature range -30°C to +60°C

Quality

- Lifespan is 25 years
- Two year warranty (last year descending)

Bel +31 (0)77 373 91 00

Kijk op www.agmi.nl

AGMI Traffic & Lighting,
Steenweg 11b, 5932 AC Tegelen

Standards & guidelines

- Conform NBd bestek • NEN-EN 1990 (Algemeen) • NEN-EN 1991-1-3 (Windlasten)
- NEN-EN 1999 • NEN-EN 12899 CE gecertificeerd

Onze certificaten





AGMI
Traffic & Lighting

Leading forward.

Workflow ALISA Mastborden

